

Gouleur

LA REINE GALANTE

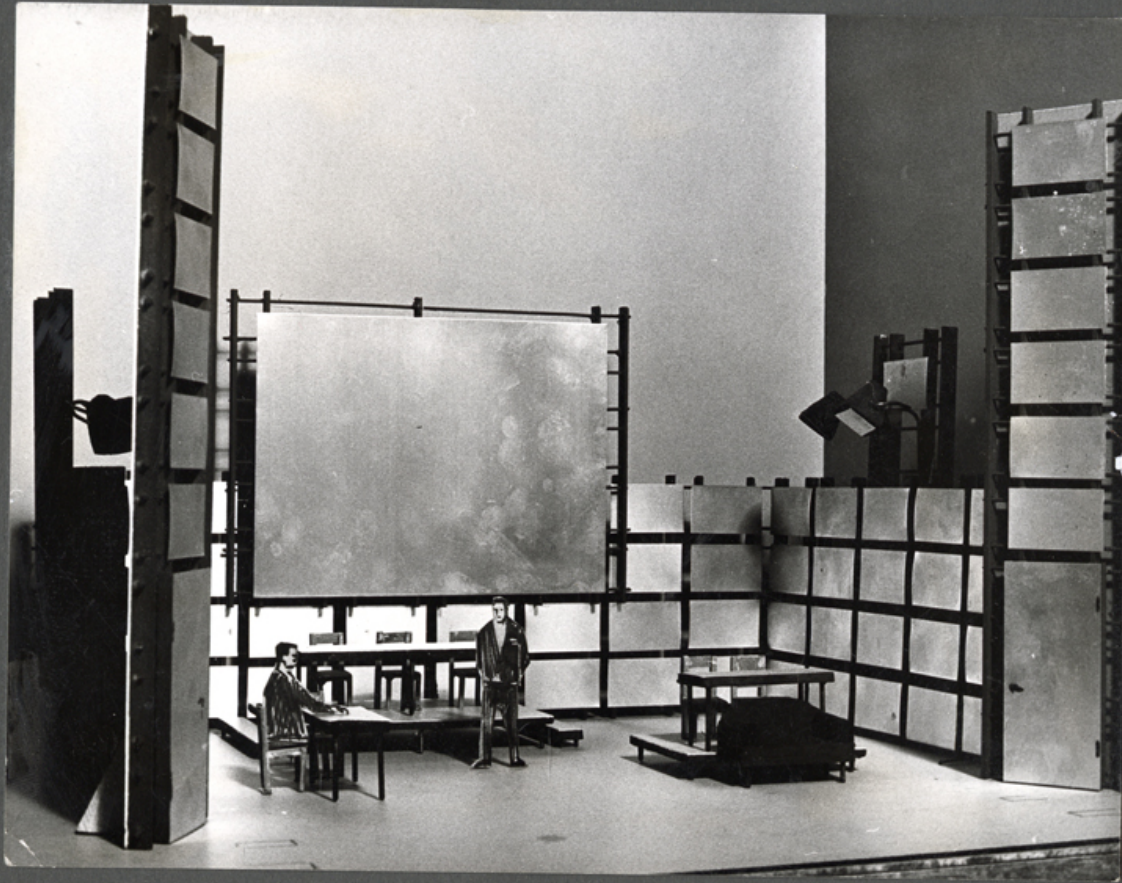








EN CAUSE : R.-J. OPPENHEIMER



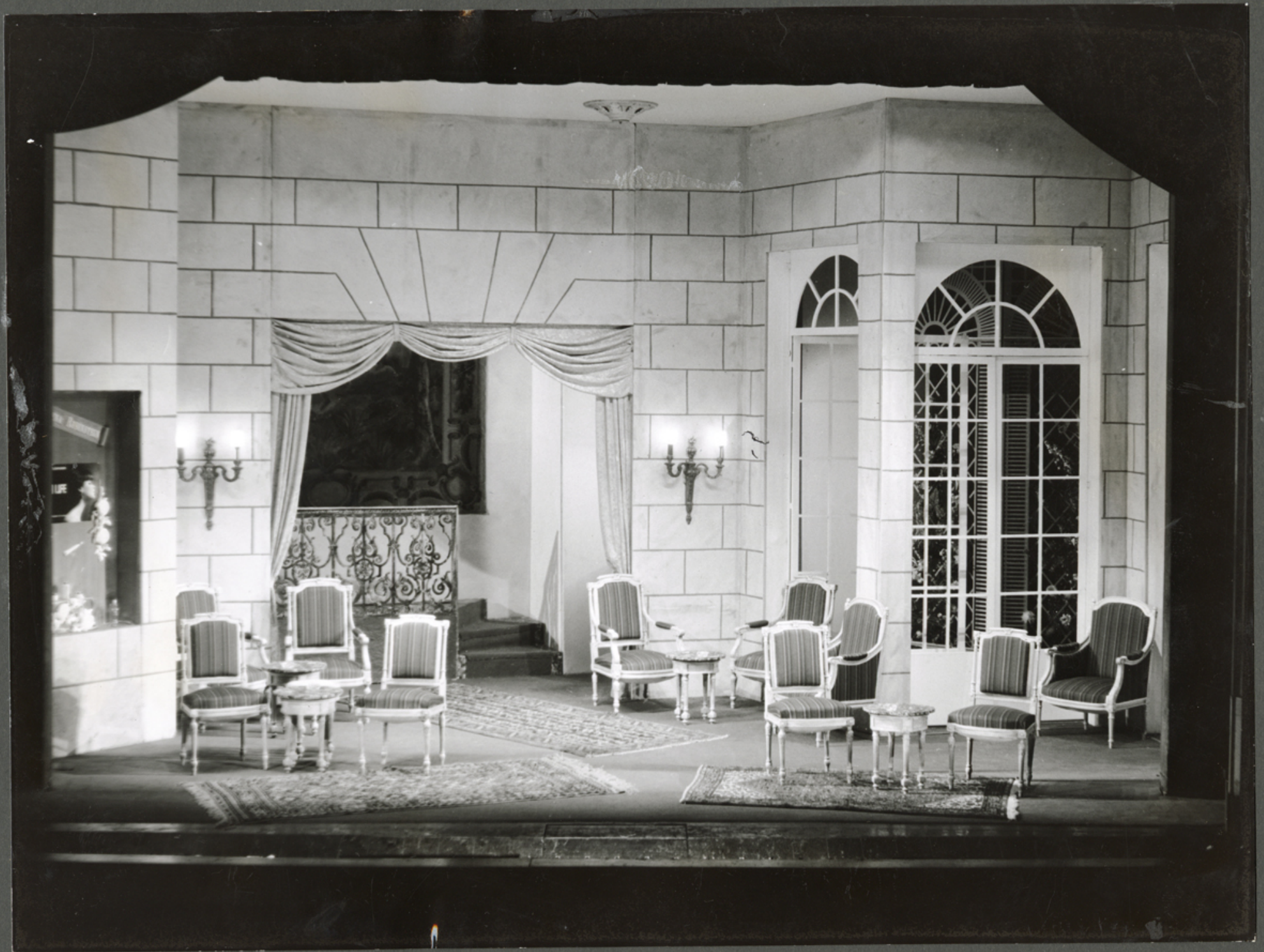
LA ROBE HAUTE DE VALENTINE



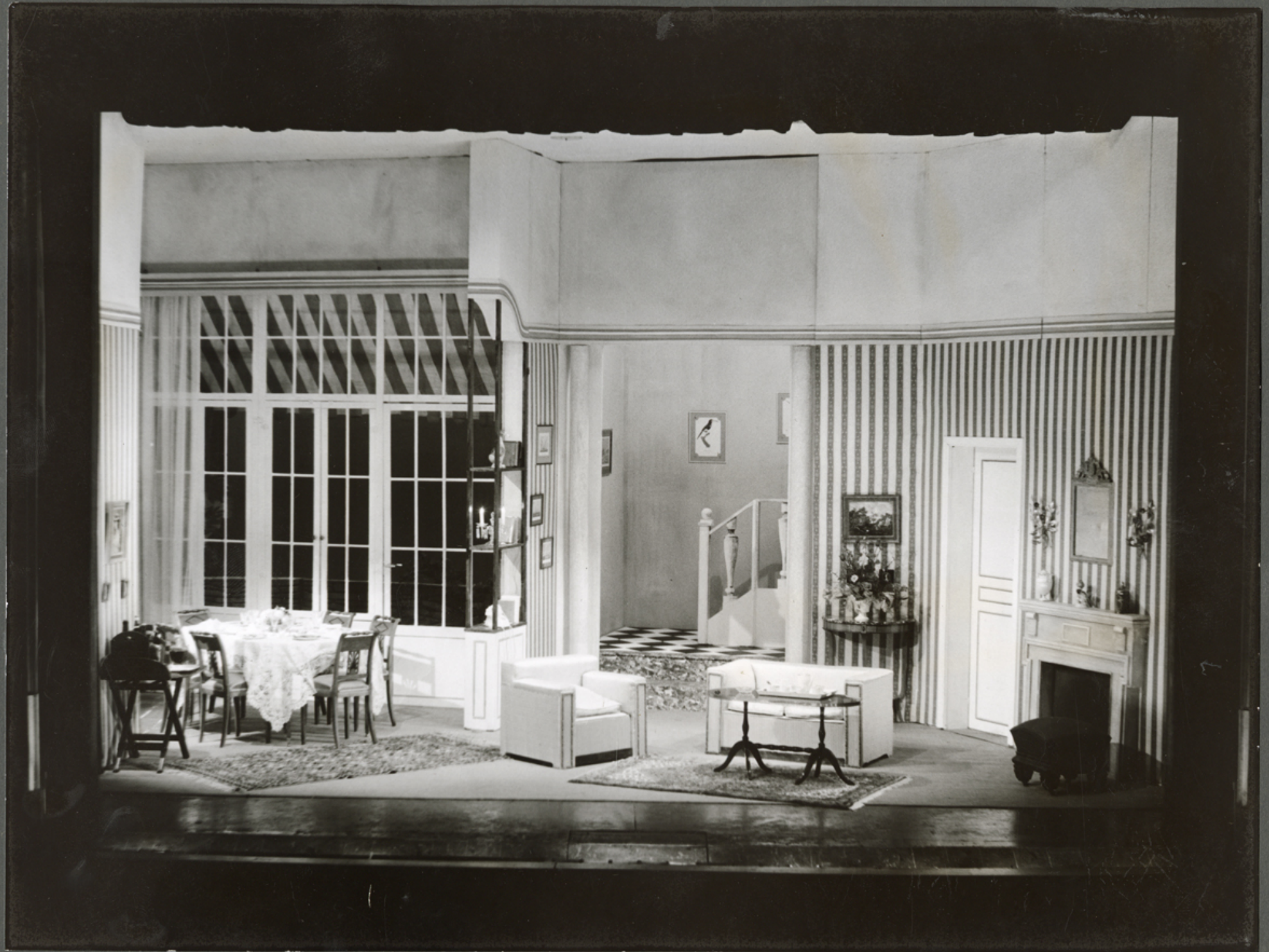


LE SEXE FAIBLE





L'AMANT COMPLAISANT





LA PRINCESSE DE CHINE







IPHIGÉNIE EN TAURIDE



LE VALET - MAÎTRE



